

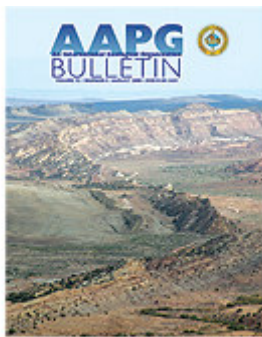
Dave Barthelmy

From: nde_40612696.4@informz.net on behalf of AAPG Bulletin [gbuckley@aapg.org]
Sent: Monday, August 04, 2008 04:04 PM
To: daba@wt.net
Subject: Your August AAPG Bulletin Is Ready

To ensure receipt of our email, please add gbuckley@aapg.org to your address book.



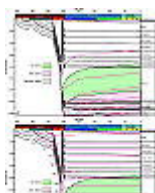
[Send this to a friend](#)



Your August AAPG Bulletin is available. Enjoy!

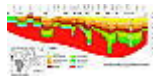
- The **NEW AAPG Bookstore Catalog** is available! [Click here for the PDF](#)
- Visit the NEW & Improved [AAPG Online Bookstore](#).
- [Petroleum Technology Transfer Council](#) is hosting 76 workshops this year covering the full spectrum of E&P operations, including exploration, unconventional resources, enhanced recovery processes, imaging technology, drilling and completion, hydraulic fracturing and many others. [Learn more! Learn faster! Learn with PTTC!](#)

Please, [click and learn more](#) about our sponsor, Paradigm SKUA:



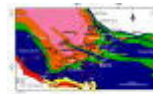
E&P NOTES: Hydrocarbon potential of the Barnett Shale (Mississippian), Delaware Basin, west Texas and southeastern New Mexico

The Mississippian Barnett Shale in the Delaware Basin (Texas and New Mexico) has the potential to be a prolific gas producer. Realizing the potential of these resources depends upon current efforts to optimize drilling and completion techniques for this shale-gas play. [Read more...](#)



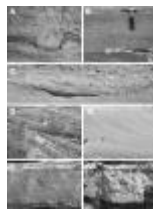
GEOLOGIC NOTE: Tectonics and subsidence evolution of the Sirt Basin, Libya

The Sirt Basin, Libya, has been the target of intensive exploration and production, yet, little is known on its stratigraphy and structure. Backstripping analysis provides new constraints on basin development and reveals four distinct tectonic phases from the Late Jurassic to present. [Read more...](#)



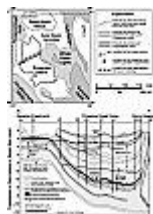
Predicting methane accumulations generated from humic Carboniferous coals in the Donbas fold belt (Ukraine)

Numerical modeling of the Donbas fold belt, Ukraine, is used to reconstruct its burial and thermal history, as well as to evaluate the factors controlling coalification patterns. Two thousand billion cubic feet of methane are predicted within the main accumulation zones. [Read more...](#)



Architecture and stratigraphy of alluvial deposits, Morrison Formation (Upper Jurassic), Utah

A unique stratigraphic cross section containing braided stream and associated floodplain deposits is presented as a resource to geoscientists. In addition, these data highlight the architectural expression of changes in accommodation space versus sediment supply. [Read more...](#)



Modeling of gas generation from the Cameo coal zone in the Piceance Basin, Colorado

Some of the largest unconventional gas resources in the Rocky Mountain region are sourced from the Cameo coal zone, Piceance Basin, Colorado. Quantitative evaluation of the generative potential indicates that this area has great potential to contain commercial accumulations. [Read more...](#)

Go ahead... You know
you want to. ➔

Search AAPG, HGS, NOGS,
GCAGS, West Texas, ETGS,
JPG, JSR & many more...

Your Search Here.

Search



Copyright 2008 American Association of Petroleum Geologists,
P.O.Box 979, Tulsa, OK, 74101-0979, USA.

For question or comments, please [click here](#).

If you would prefer not to receive any emails from the AAPG, or if you've changed your email address, please contact us at: 1 (918) 584-2555 or 1 (800) 364-2274 (from the US and Canada) or [click here](#).

POWERED BY
informz for *iMIS*